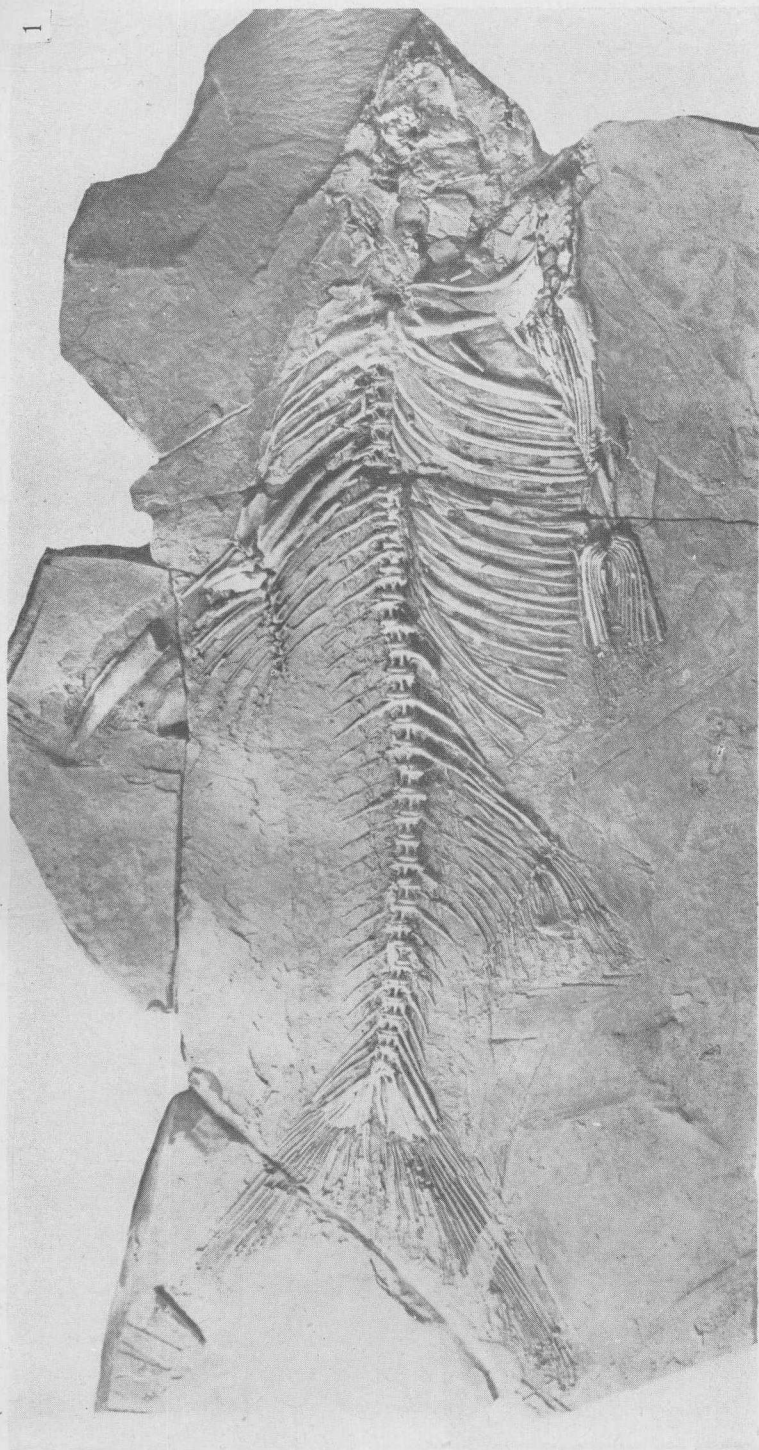
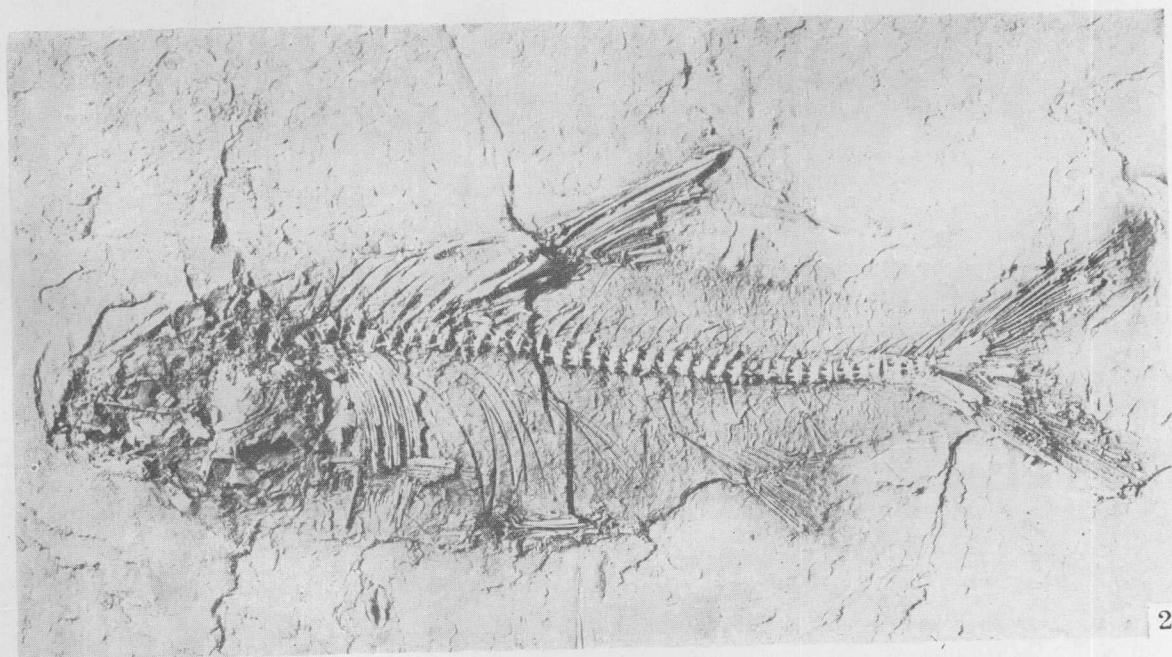
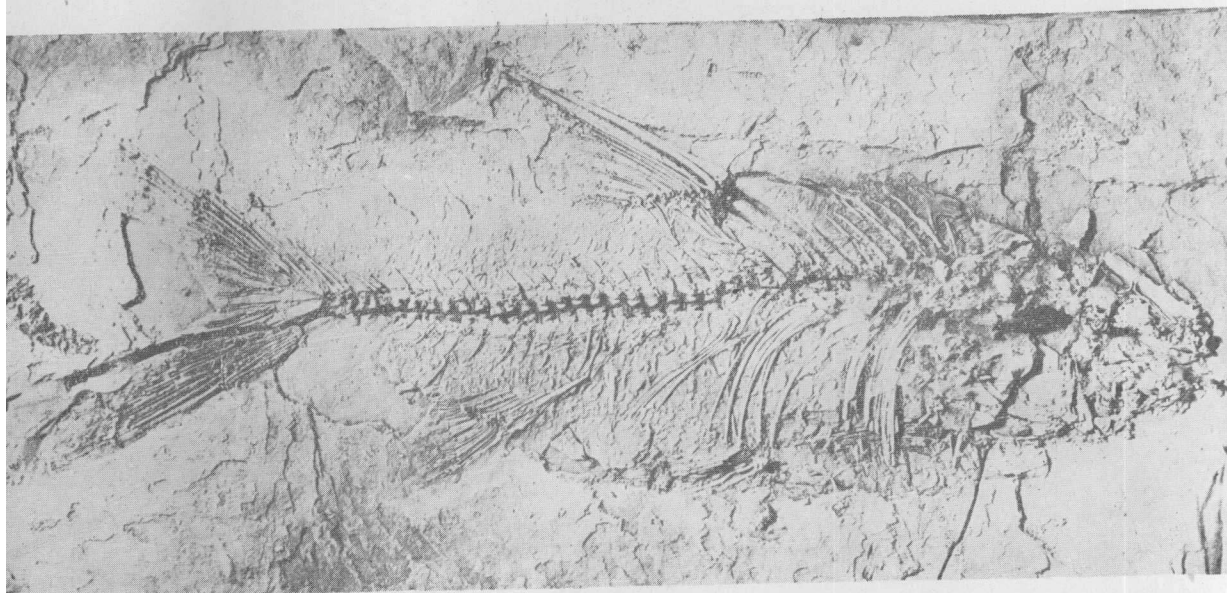


### 图 版 I 說 明

1. 榆社鱒 *Xenocypris yūshensis* (新种), 較完整个体, 右側視, (Cat. No. V. 2442), (57:A32).  
*Xenocypris yūshensis* sp. nov., nearly complete fish, right side view, × 1.



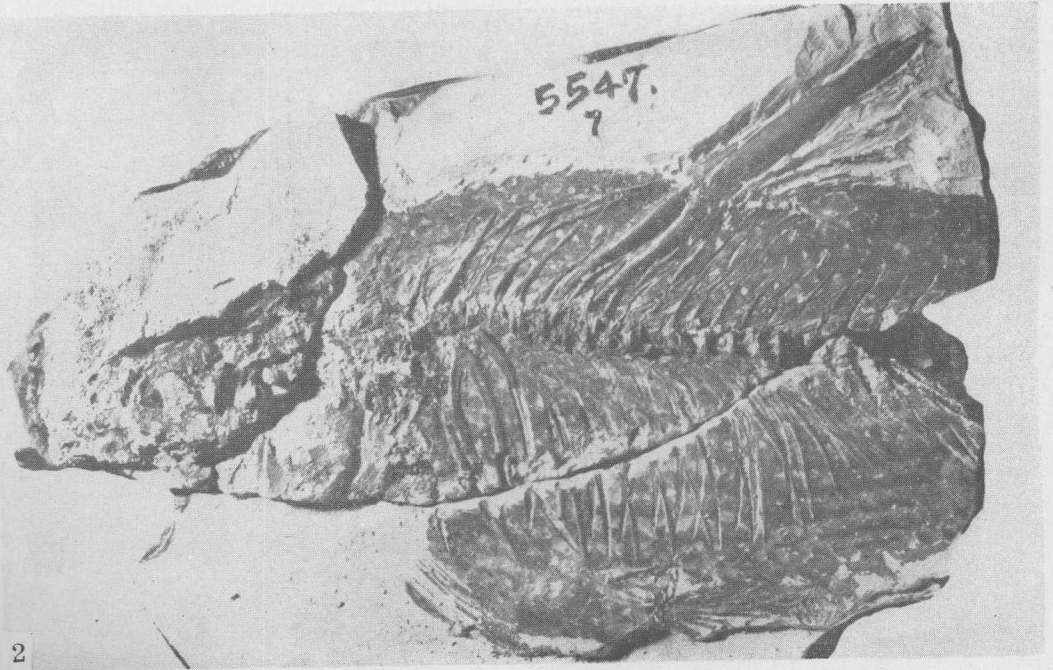
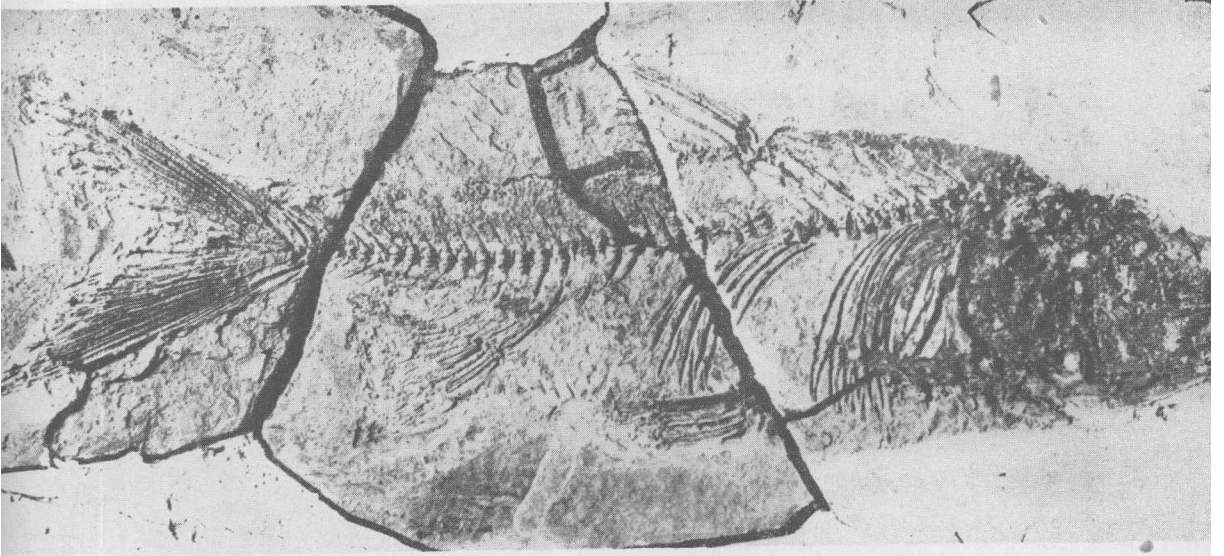


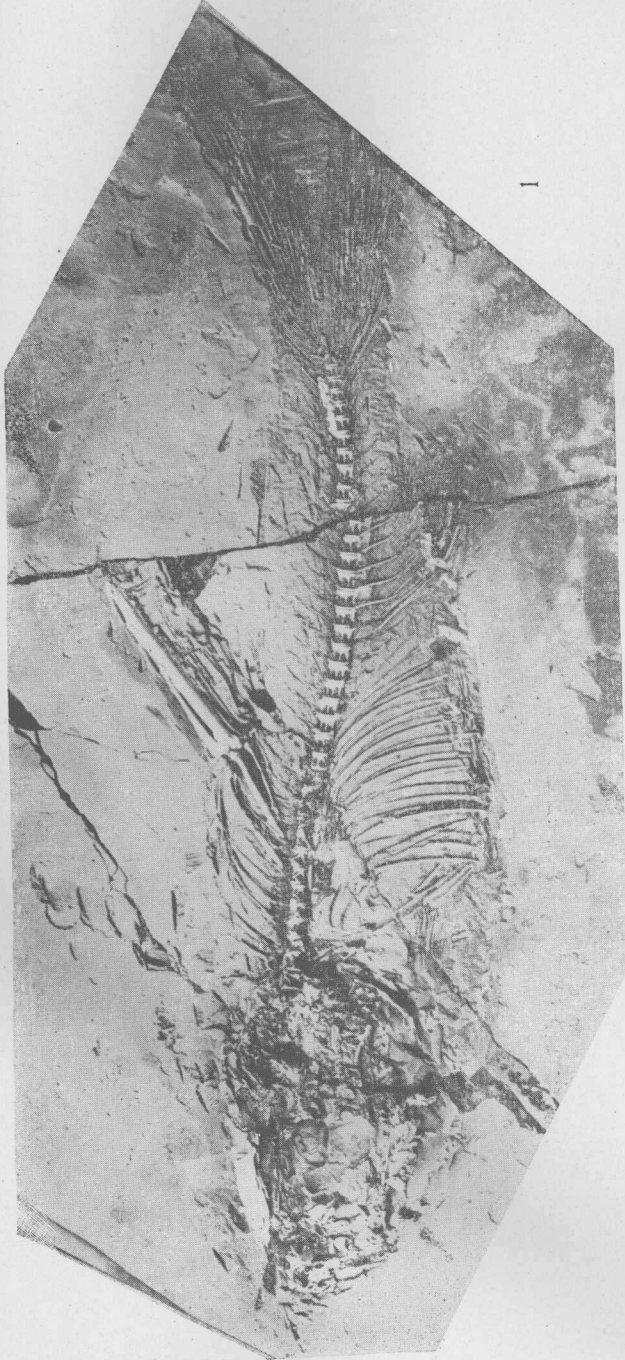
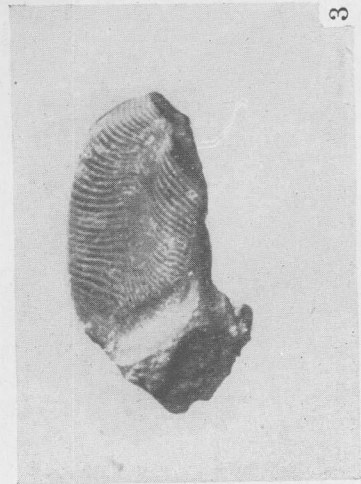
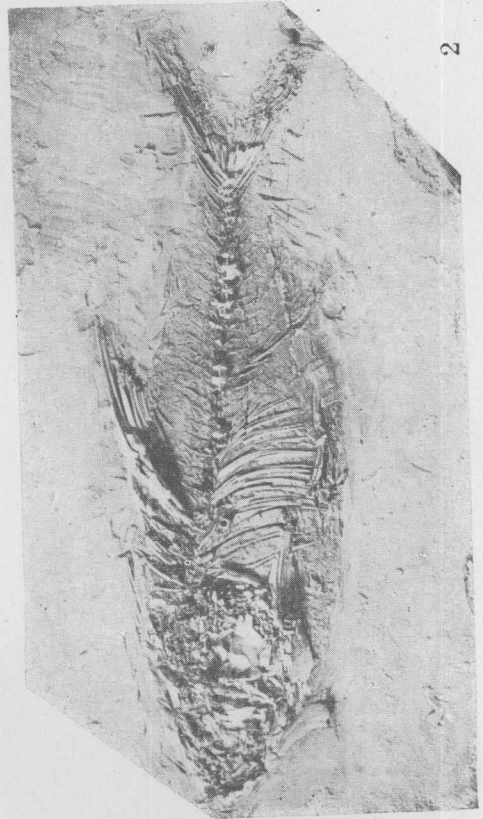
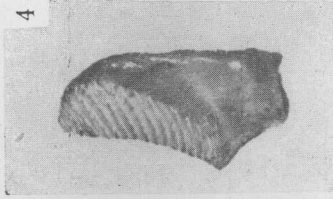
## 图版 II 說明

1. 榆社鱖 *Xenocypris yūshensis* (新种), 較完整个体, 右侧視, (Cat. No. V. 2442.1), (57:A19).  
*Xenocypris yūshensis* sp. nov., nearly complete fish, right side view, × 1.
2. 榆社鱖 *Xenocypris yūshensis* (新种), 較完整个体, 左侧視, (Cat.No. V. 2443), (57:A34).  
*Xenocypris yūshensis* sp. nov., nearly complete fish, left side view, × 1.

### 图版 III 说明

1. 榆社鲷 *Xenocypris yūshensis* (新种), 较完整个体, 左侧视, (Cat. No. V. 2444), (57:A17).  
*Xenocypris yūshensis* sp. nov., nearly complete fish, left side view,  $\times 1$ .
2. 榆社鲷 *Xenocypris yūshensis* (新种), 鱼体的前部, 左侧视, (Cat. No. V. 2446), (57:A35).  
*Xenocypris yūshensis* sp. nov., incomplete fish, left side view,  $\times 1$ .





### 图版 IV 说明

1. 榆社鱖 *Xenocypris yushensis* (新种), 较完整个体, 左侧视,  $\times 2$ , (Cat. No. V. 2451), (57:A31).  
*Xenocypris yushensis* sp. nov., nearly complete fish, left side view,  $\times 2$ .
2. 榆社鱖 *Xenocypris yushensis* (新种), 较完整个体, 左侧视,  $\times 2$ , (Cat. No. V. 2445), (57:B57).  
*Xenocypris yushensis* sp. nov., nearly complete fish, left side view,  $\times 2$ .
3. 白鲢 *Hypophthalmichthys moltrix* (Cuv. et Val.) 一个咽喉齿的背面视,  $\times 4$ , (Cat. No. V. 2454), (59:B87).  
*Hypophthalmichthys moltrix* (Cuv. et Val.), Dorsal view of pharyngeal tooth,  $\times 4$ .
4. 草鱼 *Ctenopharyngodon idellus* (Cuv. et Val.) 一个咽喉齿的侧面视,  $\times 2$ , (Cat. No. V. 2452), (59:B285).  
*Ctenopharyngodon idellus* (Cuv. et Val.), lateral view of pharyngeal tooth,  $\times 2$ .



### 图 版 V 說 明

1. 鯉 *Cyprinus carpio* Linn. 較完整的个体, 右側視,  $\times 2$ , (Cat. No. V. 2439), (57:A24).  
*Cyprinus carpio* Linn., nearly complete fish, right side view,  $\times 2$ .
2. 鯉 *Cyprinus carpio* Linn. 近乎完整的个体, 右側視,  $\times 1$ , (Cat. No. V. 2437), (57:B58).  
*Cyprinus carpio* Linn., A nearly complete fish, right side view,  $\times 1$ .
3. 鯉 *Cyprinus carpio* Linn. 鰓盖骨的外模,  $\times 2$ , (Cat. No. V2440), (57:B42).  
*Cyprinus carpio* Linn., Outer cast of operculum,  $\times 2$ .
4. 鯉 *Cyprinus carpio* Linn. 鰓盖骨的内模,  $\times 2$ , (Cat. No. V. 2440), (57:B43).  
*Cyprinus carpio* Linn., Inner cast of operculum,  $\times 2$ .

