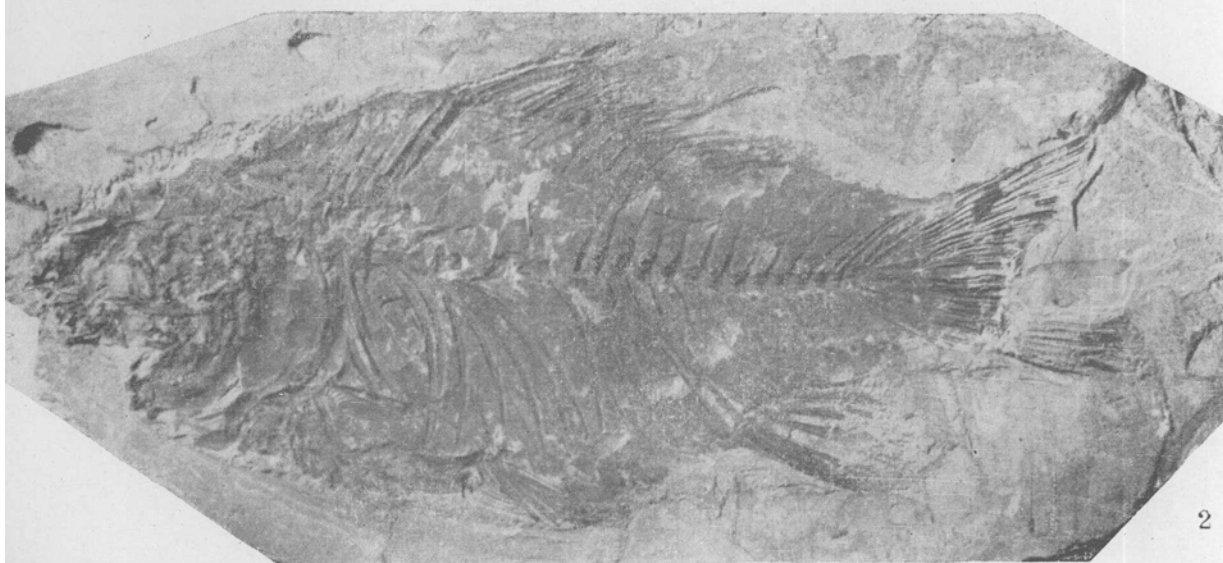
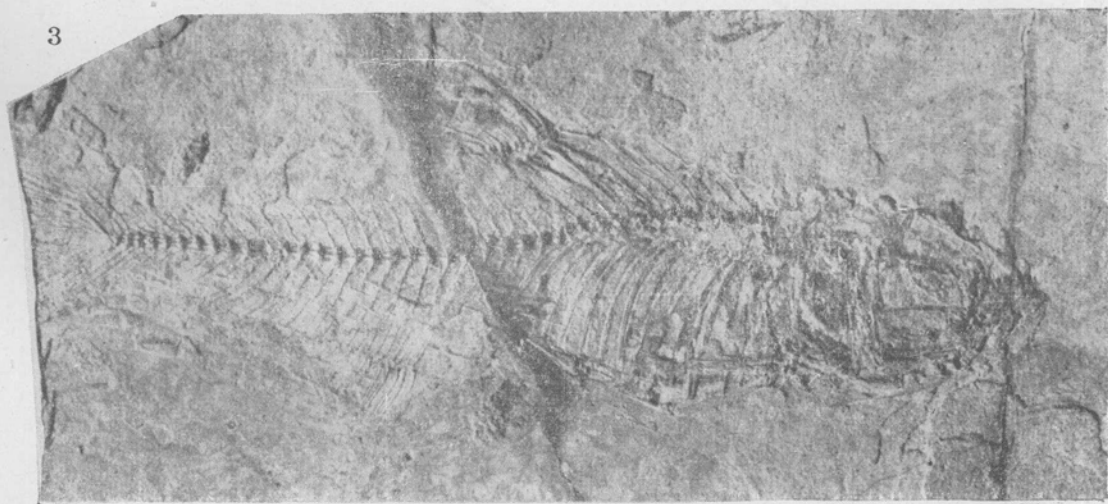


1



2



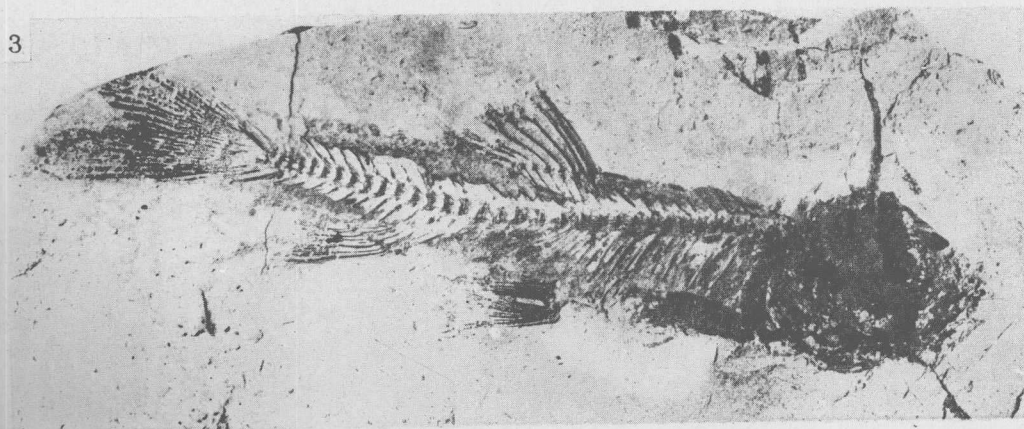
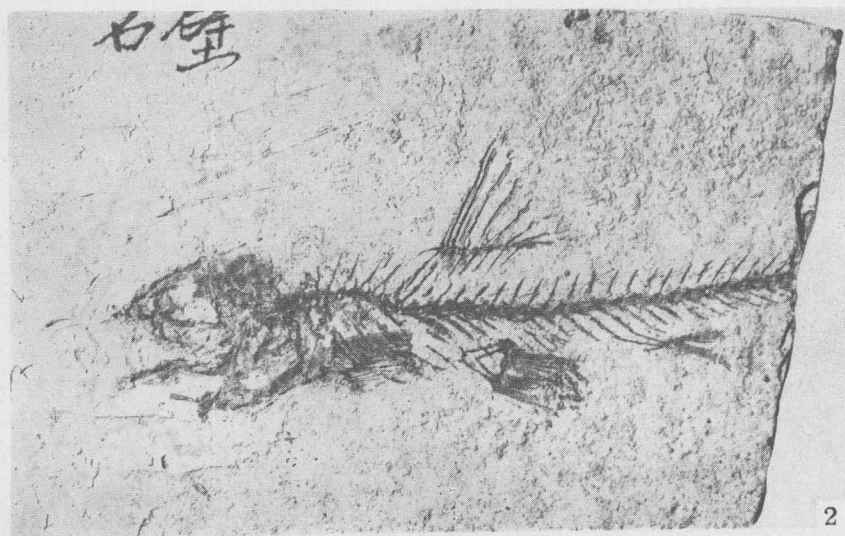
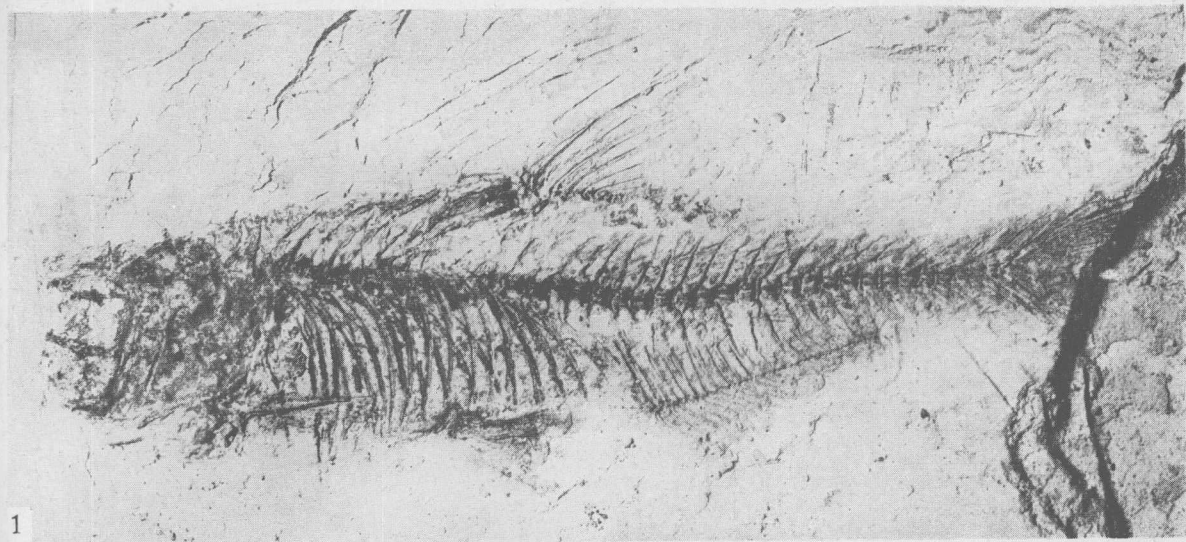
3

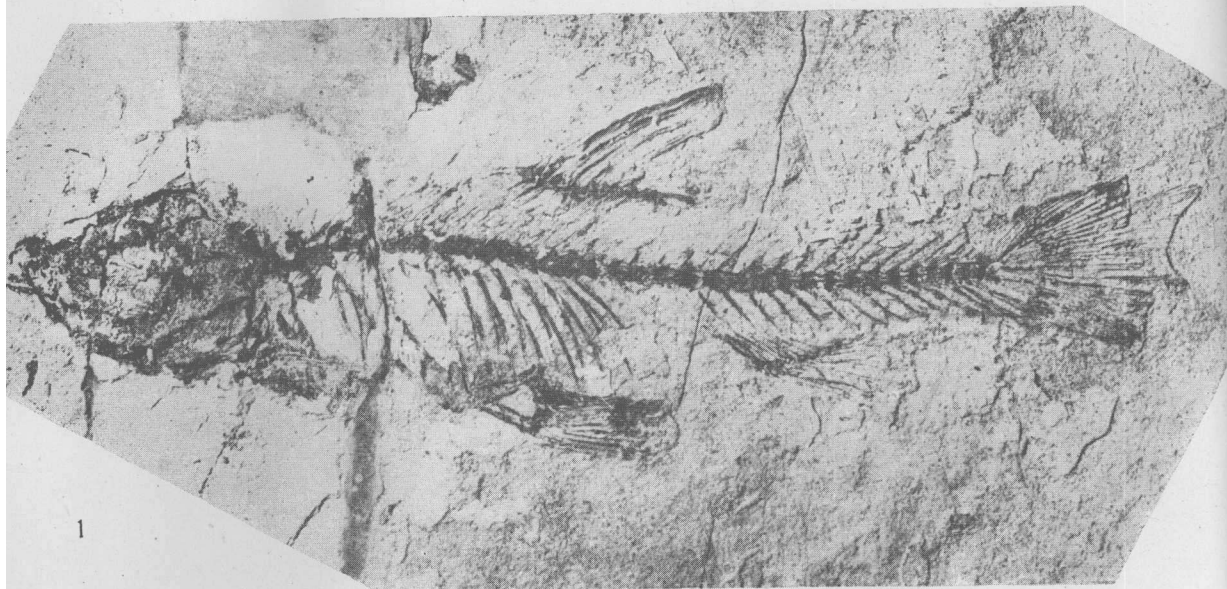
图版 VI 说明

1. 鲤 *Cyprinus carpio* Linn. 近乎完整的个体, 右侧视, $\times 2$. (Cat. No. V. 2438), (59:B76).
Cyprinus carpio Linn., nearly complete fish with imperfect caudal fin, right side view, $\times 2$.
2. 鲫 *Carassius auratus* Linn. 近乎完整的个体, 左侧视, $\times 1$, (Cat. No. V2441), (59:A265)
Carassius auratus Linn., nearly complete fish, left side view, $\times 1$.
3. 似蒙古鲌 *Culter cf. mongolicus* (Basil.) 右侧视, $\times 2$, (Cat. No. V2450.1), (59:B277)
Culter cf. mongolicus (Basil.), nearly complete fish, right side view, $\times 2$.

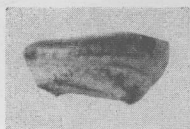
图版 VII 说明

1. 似蒙古鮎 *Culter cf. mongolicus* (Basil.) 左侧视, $\times 2$, (Cat. No. V. 2450).
Culter cf. mongolicus (Basil.), left side view, $\times 2$.
2. 张村麦穗鱼 *Pseudorasbora changtsunense* (新种), 不完整个体, 左侧视, $\times 2$, (Cat. No. V. 2449.1), (59: B53).
Pseudorasbora changtsunense sp. nov., incomplete fish, left side view, $\times 2$.
3. 张村麦穗鱼 *Pseudorasbora changtsunense* (新种), 较完整个体, 右侧视, $\times 2$, (Cat. No. V. 2449), (57: A23).
Pseudorasbora changtsunense sp. nov., nearly complete fish, right side view, $\times 2$.

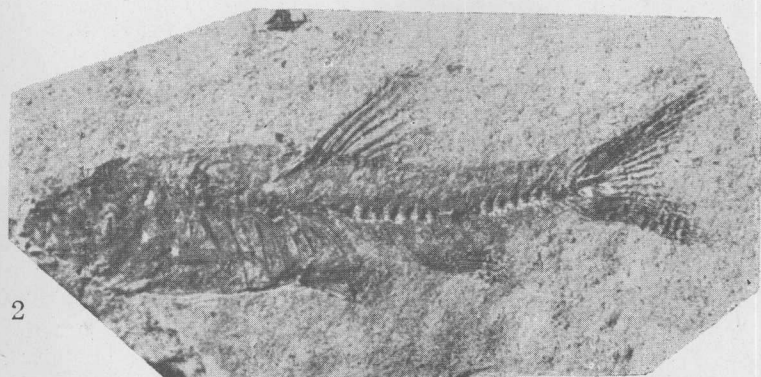




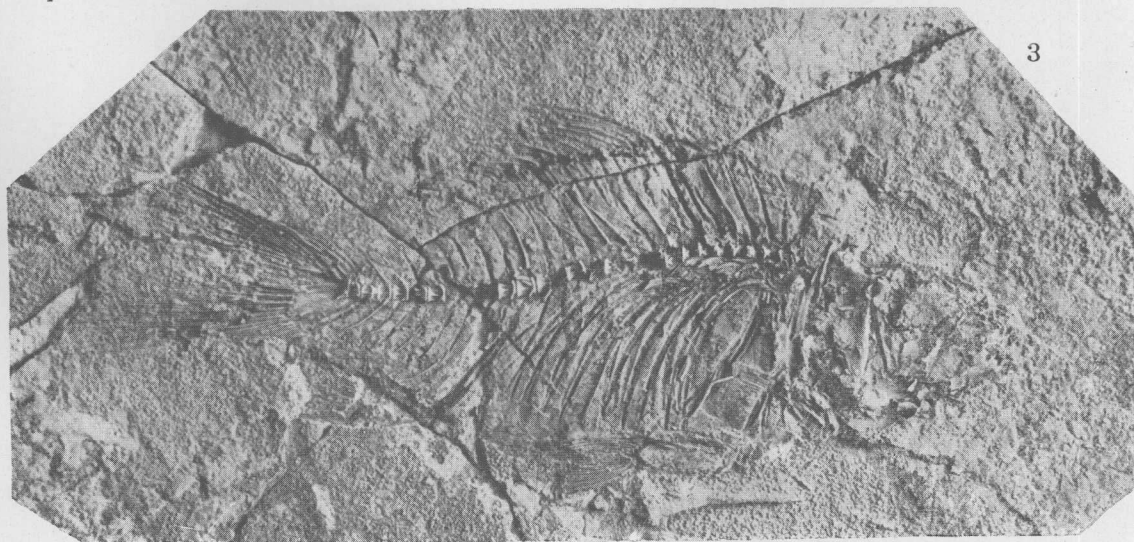
1



4



2



3

图 版 VIII 說 明

1. 张氏雅罗魚 *Leuciscus tchangii* (新种), 近于完整个体, 左侧視, $\times 2$. (Cat. No. V. 2447), (57:A36).
Leuciscus tchangii sp. nov., nearly complete fish, left side view, $\times 2$.
2. 张氏雅罗魚 *Leuciscus tchangii* (新种), 較完整个体, 左侧視, $\times 2$, (Cat. No. V. 2448), (57:A28).
Leuciscus tchangii sp. nov., nearly complete fish, left side view, $\times 2$.
3. 鯽 *Carassius auratus* Linn. 右侧視, $\times 1$, (Cat. No. V. 2441.1), (60:B296).
Carassius auratus Linn., nearly complete fish, right side view, $\times 1$.
4. 青魚 *Mylopharyngodon piceus* Linn. 一咽喉齿的咀嚼面及侧面視, $\times 2$, (Cat. No. V. 2453),
(60:B307).
dorsal and lateral view of pharyngeal tooth of *Mylopharyngodon piceus* Linn. $\times 2$.

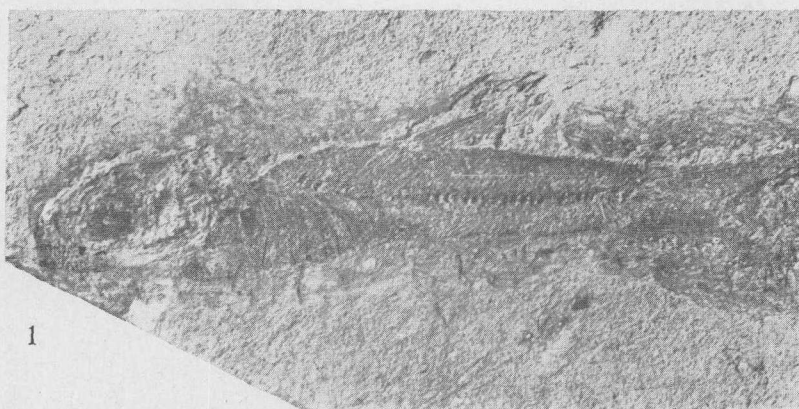
图版 IX 說明

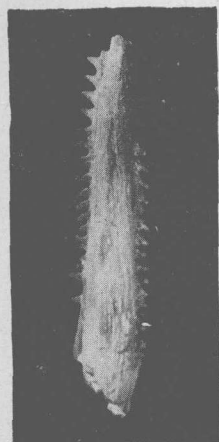
1. 长头似鲷 *Hemiculterella longicephalus* (新种), 近于完整个体, 左侧視, $\times 2$, (Cat. No. V. 2460), (60:B294).

Hemiculterella longicephalus sp. nov., nearly complete fish, left side view, $\times 2$.

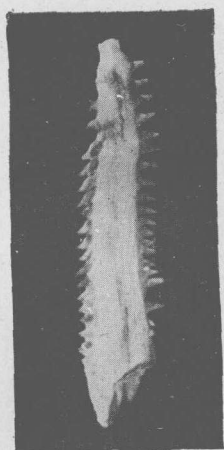
2. 长头似鲷 *Hemiculterella longicephalus* (新种), 右侧視, $\times 2$, (Cat. No. V. 2460.1), (69:B295).

Hemiculterella longicephalus sp. nov., right side view, $\times 2$.





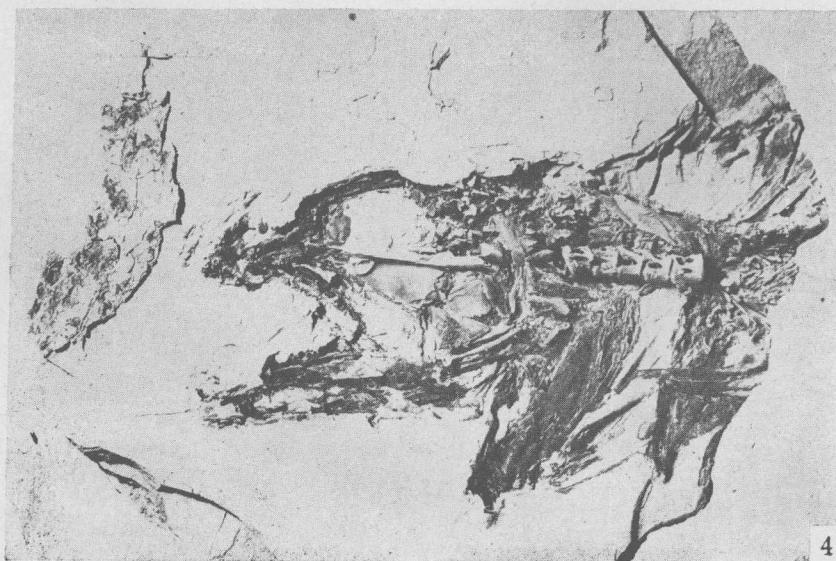
1



2



3



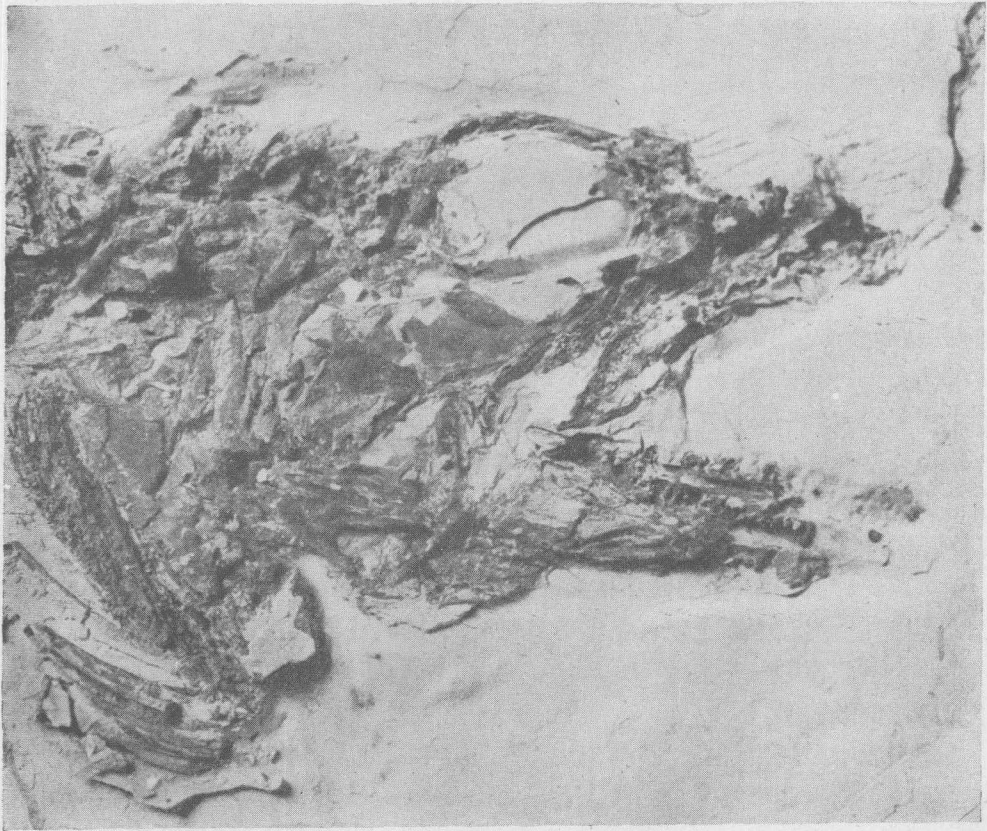
4

图 版 X 說 明

1. 鱧 *Parasilurus asotus* (Linn.) 胸鳍刺, 背面視, $\times 2$, (Cat. No. V. 2456), (59:B280).
Parasilurus asotus (Linn.), dorsal view of pectoral fin spine, $\times 2$.
2. 同上, 腹面視, $\times 2$, (Cat. No. V. 2456), (59:B281).
Ditto; ventral view, $\times 2$.
3. 武乡鱖 *Siniperca wusiangensis* (新种), 身体前部, 右侧視, $\times 1$, (Cat. No. V. 2457), (57:A25).
Siniperca wusiangensis sp. nov., anterior portion of body, right side view, $\times 1$.
4. 武乡鱖 *Siniperca wusiangensis* (新种), 保存在另侧岩面上的同一个体, $\times 1$, (Cat. No. V. 2457), (57:B55).
Ditto; same individual preserved in another side of matrix, $\times 1$.

图 版 XI 說 明

1. 武乡鲈 *Siniperca wusiangensis* (新种), 为图版 X 图 3 的放大($\times 2$), 表示前鳃盖骨的棘刺形状. (59:B275).
Siniperca wusiangensis sp. nov., skull (Plate X, fig. 3) enlarged, showing the serrate-spine of preoperculum.
2. 烏鱧 *Ophicephalus argus* Cantor 殘破的右下頰骨, 頂視, $\times 2$, (Cat. No. V. 2459), (59:B297).
Ophicephalus argus Cantor, broken dentary bone, $\times 2$.
3. 同上的外側視, $\times 2$, (59:B286).
Ditto; outer lateral view, $\times 2$.



1



2



3