



First record of marine gastropods (wentletraps) from mid-Cretaceous Burmese amber

Ting-Ting Yu^{a,b,*}, Bo Wang^{a,c,*}, Ed Jarzembowski^{a,d}

^a State Key Laboratory of Palaeobiology and Stratigraphy, Nanjing Institute of Geology and Palaeontology and Center for Excellence in Life and Palaeoenvironment, Chinese Academy of Sciences, 39 East Beijing Road, Nanjing 210008, China

^b University of Science and Technology of China, Hefei 230026, China

^c Shandong Provincial Key Laboratory of Depositional Mineralization & Sedimentary Minerals, Shandong University of Science and Technology, Qingdao, Shandong 266590, China

^d Department of Earth Sciences, The Natural History Museum, London SW7 5BD, UK

Received 2 July 2018; received in revised form 2 September 2018; accepted 14 December 2018

Available online 26 December 2018

Abstracts

Gastropod fossils are rarely preserved in amber with only a few records of terrestrial snails. Two new species, *Epitonium (Epitonium) zhuoi* n. sp. and *Epitonium (Papyriscala) lyui* n. sp. are described based on two well-preserved specimens from mid-Cretaceous amber from northern Myanmar. High-resolution three-dimensional images using X-ray micro-computed tomography (micro-CT) are provided. These species can be attributed to the family Epitoniidae (wentletraps) based on the shell characters such as the slender and conical shell-shape, numerous whorls, round aperture and regular, axial sculpture of high, sharply-ribbed costae. Our find is the first record of marine gastropods preserved in amber, and suggests that the Burmese amber forest probably existed close to the seashore.

© 2018 Elsevier Ireland Ltd Elsevier B.V. and Nanjing Institute of Geology and Palaeontology, CAS. Published by Elsevier B.V. All rights reserved.

Keywords: Burmese amber; Caenogastropoda; Marine prosobranch gastropod; Epitoniidae; *Epitonium*; New species

1. Introduction

The Epitoniidae, commonly known as wentletraps (“spiral staircase” shells), is a large family of Caenogastropoda. It resembles Family Cerithiidae Fleming, 1822 in having elongate conical shells and an ornament of spiral and axial ribs, but the apertures of the latter usually have flared outer lips and a more or less long and curving siphonal canal (Bandel, 2006). Extant epitoniids occur in practically all seas from the lower intertidal zone to abyssal depths (Cox and Moore, 1960; Kilburn, 1985). Mesozoic epitoniids are widespread from tropical and warm-temperate seas, e.g., *Acirsa* Sohl, 1964 from the Upper

Cretaceous of Mississippi, USA (Sohl, 1964); *Gibboscala Kollmann, 2005* and *Confusiscula de Boury, 1909a* from the Lower Cretaceous of the Volga Region near Ulyanovsk, Russia (Blagovetshenskiy, 2015); and a possible epitoniid, *Claviscala* sp. from the Lower Cretaceous of southern Mazowsze, Poland (Kaim, 2004). Compared with the relatively abundant fossil record in the Western Hemisphere, records from eastern Asia are rare, comprising only species belonging to the genera *Acirsa Mörch, 1857* and *Confusiscula de Boury, 1909a* from the Lower Cretaceous of Japan (Kase, 1984).

The type genus *Epitonium Röding, 1798* is abundant in records documenting the Cenozoic, e.g., *Epitonium (Boreoscala?)* sp. from the Eocene of Tanga (Ladd, 1970); *Epitonium (Crisposcala) okinavensis Macneil, 1960* and *Epitonium (Glabriscala) submaculosum Macneil, 1960* from the Pliocene of Japan (Macneil, 1960). However, Mesozoic records of *Epitonium* are rather sparse: *Epitonium* cf. *faearium Dockery, 1993* has been reported from the lower Maastrichtian of southern Mexico (Perrilliat et al., 2000); *Epitonium* sp. from the Creta-

* Corresponding authors at: State Key Laboratory of Palaeobiology and Stratigraphy, Nanjing Institute of Geology and Palaeontology and Center for Excellence in Life and Palaeoenvironment, Chinese Academy of Sciences, 39 East Beijing Road, Nanjing 210008, China.

E-mail addresses: ttyu@nigpas.ac.cn (T.T. Yu), bowang@nigpas.ac.cn (B. Wang).

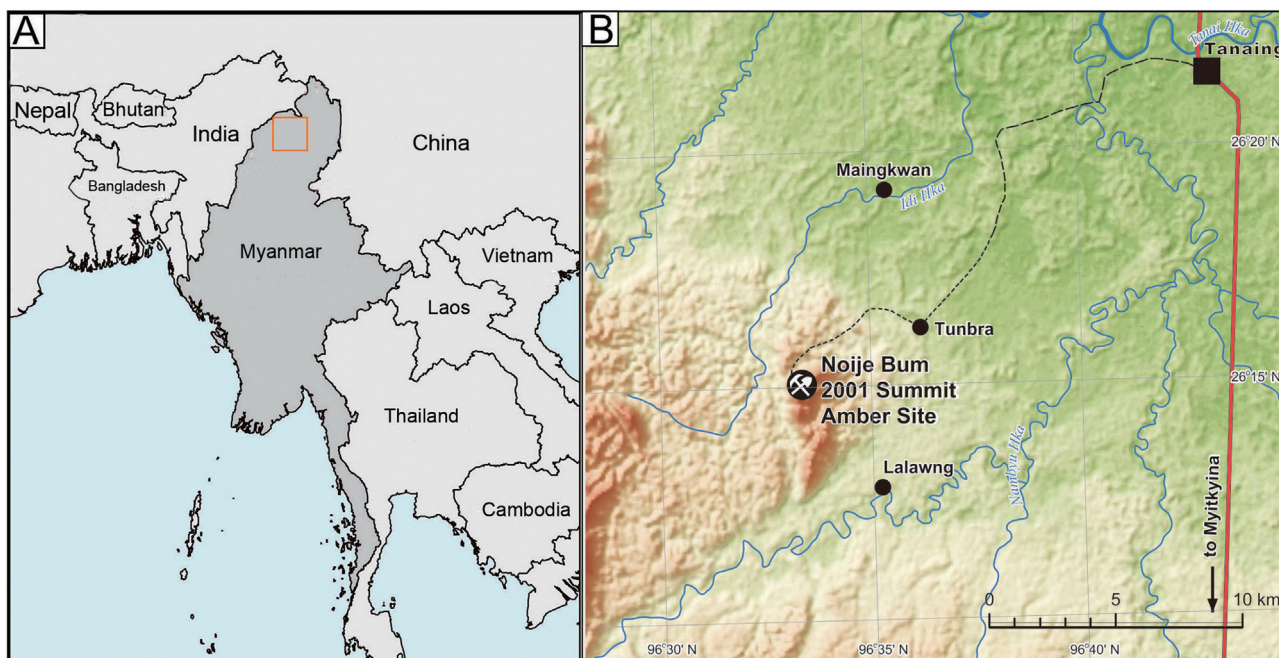


Fig. 1. Location of amber mining area near Noiije Bum Village, Myitkyina District, Kachin State, Myanmar. Compiled from data provided by Cruikshank and Ko (2003) and Wandrey (2006). (A) Geographic location of Myanmar; (B) location of amber mining area, northern Myanmar.

ceous of Minnesota (Bergquist, 1944); and *Epitonium faerarium* Dockery, 1993 from the Upper Cretaceous of Coffee Sand, Mississippi (Sohl, 1964; Dockery, 1993). In this work, we report the first record of Epitoniidae preserved in amber. Two new species, *Epitonium (Epitonium) zhuoi* n. sp. and *Epitonium (Papyriscala) lyui* n. sp., are described from Burmese amber dating from the mid-Cretaceous.

2. Geological setting

Amber has been recorded from the Shwebo, Thayetmyo, Pakokku, and Pegu districts in Myanmar. However, the only commercial source is the Hukawng Valley in Tanaing Township, Myitkyina District of Kachin State (Cruikshank and Ko, 2003; Ross et al., 2010). The amber pieces containing the entombed gastropods come from an amber mine located near Noiije Bum Village, Tanaing Town (Kania et al., 2015; Fig. 1). The U-Pb dating of zircons from the volcanoclastic matrix of the amber gave a maximum age of about 99 million years (Shi et al., 2012).

3. Material and methods

The amber containing the gastropods is yellow and transparent. Photographs were taken using a Zeiss Stereo Discovery V16 microscope system at the State Key Laboratory of Palaeobiology and Stratigraphy, Nanjing Institute of Geology and Palaeontology, Chinese Academy of Sciences. All images are digitally stacked photo micrographic composites of approximately 50 individual focal planes that were obtained using the software Helicon Focus 6 for better illustration of the 3D structures. All images and figures were prepared with the aid of CorelDraw X4 and Adobe Photoshop CS3 graphic design software. The

specimens are housed in the Nanjing Institute of Geology and Palaeontology, Chinese Academy of Sciences (NIGPAS).

Some detailed structures of these amber gastropods (e.g., teleoconch ornamentation and aperture) are not visible under the light microscope; therefore, we scanned the holotypes (NIGP168832 and NIGP168833) in the micro-CT lab of NIGPAS using a 3D X-ray microscope (3D-XRM) Zeiss Xradia 520 versa for additional detail. Unlike conventional micro-CT, which relies on maximum geometric magnification and a flat panel detector to achieve high resolution, the 3D-XRM uses CCD-based objectives to get higher spatial resolution. A CCD-based 0.4× objective was used, providing isotropic voxel sizes from 0.5 mm with the help of geometric magnification. During the scan, the running voltage for the X-ray source was set at 60 kV (NIGP168832) and 50 kV (NIGP168833), and a thin filter (LE2) was used to avoid beam-hardening artefacts. To get a high signal-to-noise ratio, 2001 projections over 360° were collected and the exposure time for each projection was set at 1 s (for NIGP168832) and 4 s (for NIGP168833). Volume data processing was performed using the software Vgstudio Max (version 3.0, Volume Graphics, Heidelberg, Germany). All taxonomic acts established in the present work have been registered in ZooBank (see below), together with the electronic publication LSIC: urn:lsid:zoobank.org:pub: F24A8397-6C96-484C-BFD8-B03A38595440.

Abbreviations: H = shell height; D = greatest width of shell; S = spire length (without aperture); h = aperture height; d = aperture width.

4. Systematic palaeontology

Superfamily Epitonioida Berry, 1910

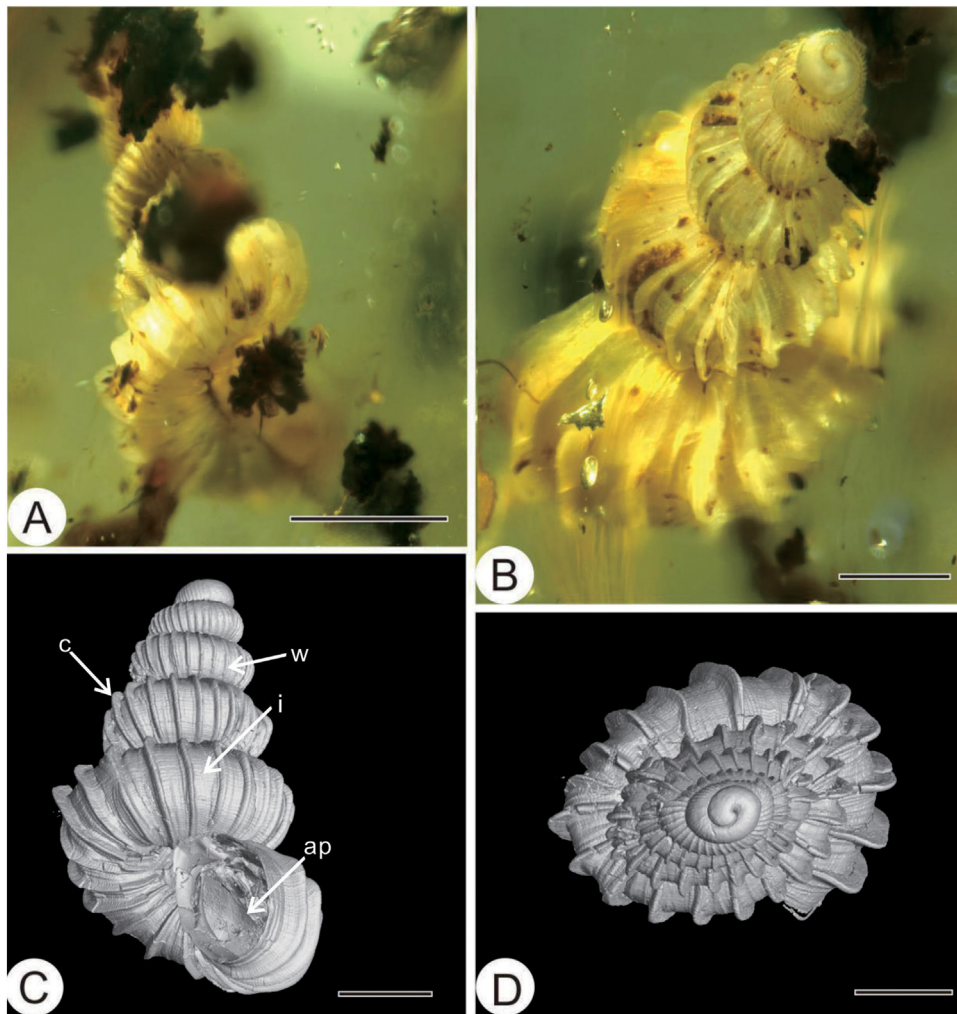


Fig. 2. *Epitonium (Epitonium) zhuoi* n. sp. (A, C) Apertural view; (B) lateral view; (D) apical view. (C, D) Micro-CT reconstruction. Scale bar = 0.5 mm. Abbreviations: ap – aperture (pertaining to the opening into the shell); c – costa (axial ridge); i – interspace (intermediate space between structural features on a shell surface); w – whorl (one complete 360° turn of a gastropod shell about the imaginary central axis).

Family Epitoniidae Berry, 1910

Genus *Epitonium* Röding, 1798

Subgenus *Epitonium* Röding, 1798

Diagnosis (after Dockery, 1993 and Kilburn, 1985): High-spired shell with a multispiral and usually smooth protoconch; teleoconch with convex whorls and with or without spiral sculpture in interspaces; axial ribs fine and filiform to strong and lamellate; spiral lirae relatively weak or absent; umbilicus present or absent; aperture circular, operculum usually lacking.

Type species: *Turbo scalaris* Linnaeus, 1758, subsequent designation by Suter (1913).

Epitonium (Epitonium) zhuoi n. sp.

urn:lsid:zoobank.org:act: D20E116D-FB1E-4D05-BF47-BEC955D56F8D

(Fig. 2)

Etymology: After De Zhuo, the collector of this specimen.

Holotype: Reg. no. NIGP168832.

Locality and horizon: Reportedly mined near Noije Bum Village, Tanaing Township, Myitkyina District, Kachin State, northern Myanmar (26°15'N, 96°33'E); unnamed horizon, mid-Cretaceous, upper Albian or lower Cenomanian.

Description: Shell minute, conical-turbinate in shape. Protoconch with about 1.5 smooth whorls; teleoconch highly spired with an apical angle of 78°. Whorls convex and regularly increasing in size. Teleoconch with about 4.5 whorls and sculptured with more than 20 strong and prominent axial ribs which connect at the suture; axial ribs thin, fairly low, straight, more or less continuous and consist of fine, intermittently raised glossy and opaque lamellae, with scratch-like spiral microstriae (visible under 3D X-ray microscope). Suture deeply impressed; umbilicus widely fenestrate, partly covered by labial expansion; aperture oblongovate; apertural margin thin and fragile.

Remarks: The specimen can be attributed to the genus *Epitonium* based on the shell characters of a conical shell, sculptured with prominent axial ribs and intervals glossy and smooth; it differs from all other species of this genus in having a thin and fragile apertural margin.

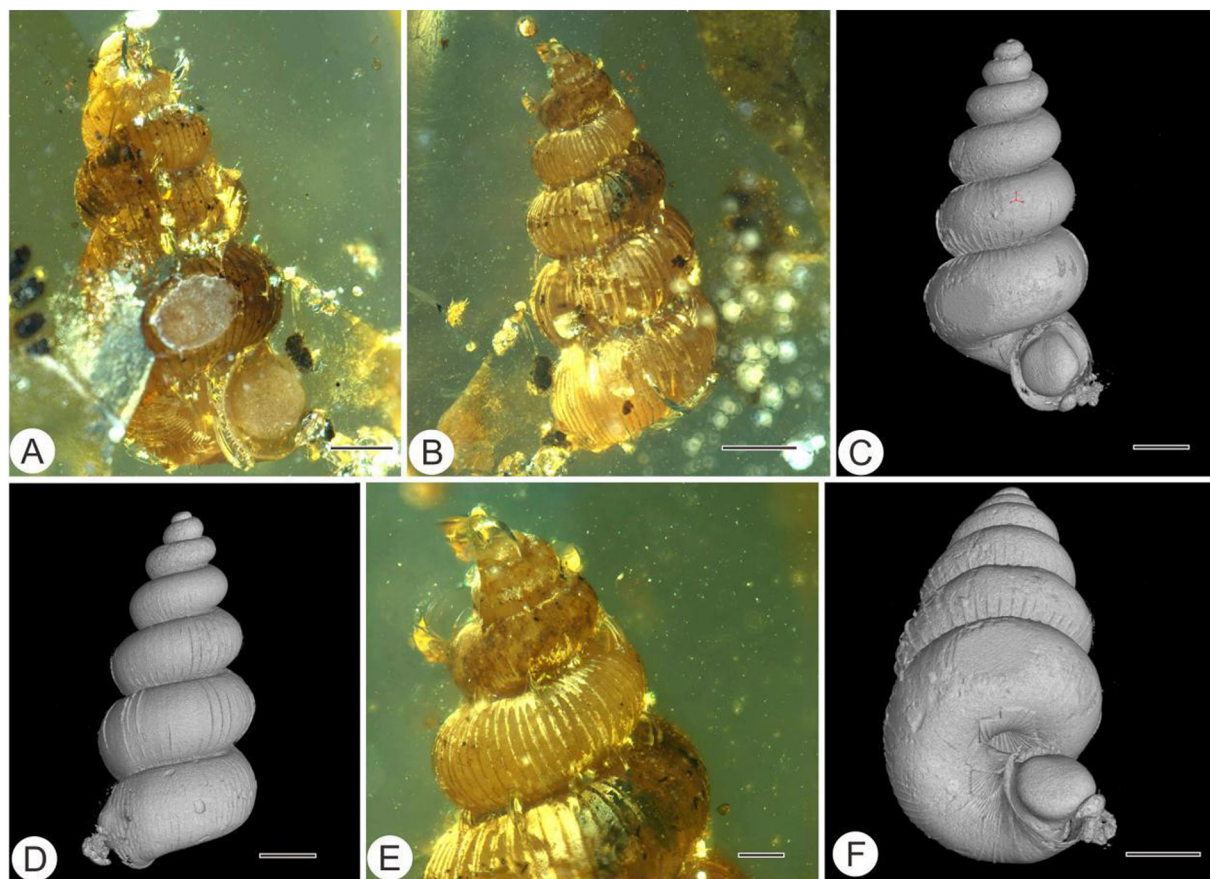


Fig. 3. *Epitonium (Papyriscala) lyui* n. sp. (A) Apertural view; (B) lateral view; (E) apical view showing embryonic shell. (C, D, F) Micro-CT reconstruction. Scale bar = 0.5 mm for (A–D, F); 0.2 mm for (E).

It resembles *Scala pallasii* Kiener, 1838 (Cernohorsky, 1978) from the Nansha Sea (Feng, 1996) in having the conical shell-shape, ornament of prominent spiral ribs and ovate aperture; it differs from the latter in having only two whorls in the protoconch, and a thin and fragile apertural margin.

E. (Epitonium) zhuoi n. sp. also resembles *E. (Periapta) pandion* (Clench and Turner, 1952) from Cobscook Bay in North Carolina (Clench and Turner, 1952) in having a slender, conical shell and a thin and fragile apertural margin, but it differs from the latter in having a smaller shell and thin, erect axial costae.

Measurements: Based on 5 or 6 whorls; H = 4.3 mm; D = 2.3 mm; S = 2.9 mm; h = 1.4 mm; d = 0.8 mm.

Subgenus *Papyriscala* de Boury, 1909b

Diagnosis: Shell moderately small, fragile, usually broadly pyramidal, whorls strongly convex, suture moderately deep, simple to narrowly fenestrate, umbilicus open, narrow; peristome thin, simple, not auriculate; axial ribs numerous, thin, low, non-cornate at shoulder; spiral sculpture absent or forming a few faint scratches (after Kilburn, 1985).

Epitonium (Papyriscala) lyui n. sp.

urn:lsid:zoobank.org:act: 68B9982C-ACE1-497A-AA01-01015F7EB74B

(Fig. 3)

Etymology: After Ming Lyu, the collector of the specimen.

Holotype: Reg. no. NIGP168833.

Locality and horizon: Reportedly mined near Noije Bum Village, Tanaing Township, Myitkyina District, Kachin State, northern Myanmar (26°15'N, 96°33'E); unnamed horizon, mid-Cretaceous, upper Albian or lower Cenomanian.

Description: Shell small, elongate with a high spire. Protoconch with about two smooth whorls. Teleoconch with four strongly convex whorls, sculptured with thin, low, straight and discontinuous axial ribs, more than 30 on body whorl (10–20 fewer on penultimate whorl), spiral sculpture absent; intervals smooth; suture deep but simple; umbilicus narrow and chinked. Aperture circular in shape, inner lip thin and slightly reflexed (visible under 3D X-ray microscope).

Remarks: The new species closely resembles *Epitonium (Papyriscala) emiliae* (Melville and Standen, 1903), ranging from the Gulf of Arabia to Algoa Bay (South Africa), in its strongly convex whorls, numerous axial ribs, and lack of spiral sculpture. It differs from the latter in having much finer axial ribs (more than 36) on the body whorl; however, *E. emiliae* only has 21–36 axial ribs on the body whorl. Extant specimens of *E. emiliae* have been reported from inshore dredgings (Kilburn, 1985). *E. lyui* n. sp. probably lived in a similar shallow marine environment.

Measurements: 7 whorls; H = 3.4 mm; D = 1.5 mm; S = 2.5 mm; h = 0.9 mm; d = 0.7 mm.

5. Discussion

The Epitoniidae is a large family with an estimated number of species exceeding 600 (Cox and Moore, 1960; Kilburn, 1985). It occurs in practically all seas and is easily distinguished by a long spire, very deep sutures, and characteristically strong axial varices that run across all of the whorls from the tip of the spire to the aperture. Most species have a slender, conical shell with joined whorls, a rounded aperture and a small umbilicus (Keen, 1971; Bouchet and Waren, 1986). Our new specimens can be attributed to Epitoniidae based on their slender and conical shells with a rounded aperture, and tallspired, numerous whorls. Furthermore, they belong to the genus *Epitonium* in having the lamellar axial sculpture consisting of thin raised lamellae, and regular axial costae and interspaces weakly sculptured (Bouchet and Waren, 1986).

Gastropod fossils are usually very rare in amber, but they are abundant in mid-Cretaceous Burmese amber. Although several gastropods have been mentioned or described from Burmese amber, none are marine gastropods (e.g., Grimaldi et al., 2002; Naggs and Raheem, 2005; Poinar and Poinar, 2007; Poinar, 2011; Yu et al., 2018). Our find is the first record of marine gastropods from this fossil resin. The palaeoenvironment is considered to have been coastal deltaic or estuarine from several lines of palaeontological evidence: the occurrence of a rare ammonite (*Mortonicerias* sp.), bedding of the enclosing siliciclastic sediment, and presence of bivalve body fossils and bivalve (pholadid) borings in the amber (Cruikshank and Ko, 2003; Smith and Ross, 2018). Our gastropod inclusions provide further evidence that the Burmese amber forest probably grew close to the seashore.

According to Bouchet and Waren (1986), there are three types of protoconch morphology in the family Epitoniidae: type 1, protoconch paucispiral, composed of 1 or 1.5 smooth whorls; type 2, protoconch multipiral, composed of 3 or 4 whorls with strong axial ribs; type 3, protoconch multipiral, composed of 3 or 4 whorls that appear smooth under the microscope, although a microsculpture is often present. Bouchet and Waren (1986) pointed out that the type 1 corresponds to species without planktotrophic larval development and could arise independently in different lineages. In *Epitonium*, this character appears at species level only and is probably a consequence of life in a high latitude environment. Types 2 and 3 correspond to species with planktotrophic larval development (Bouchet and Waren, 1986). *E. lyui* n. sp. and *E. zhuoi* n. sp. clearly conform to type 1, suggesting that these two species did not undergo planktotrophic larval development and probably lived in a high latitude environment. However, the palaeogeographical location of *E. lyui* n. sp. and *E. zhuoi* n. sp. from Burmese amber is in a low latitude area. This anomaly needs further research, because the multiple geologic events and dynamics of West Burma (source of Burmese amber) have a multi-faceted tectonic history (Hall, 2012; Sevastjanova et al., 2016).

The epitoniid family includes numerous species from all parts of the world, but its diversity is especially high in tropical and subtropical areas (Kilburn and Rippey, 1982). Extant epitoniids are parasitic on coelenterates and most are associated with sea-anemones (Kilburn and Rippey, 1982) or may be free-living micropredators feeding on invertebrates, such as annelid worms and nemertean (Lima et al., 2012). Many extant species of this family live with or forage for the coelenterate hosts on which they feed, but some shallow-water species are reported to live with corals (Robertson, 1970). All the coral-associated Epitoniidae are likely to feed on the soft tissues of their hosts in the same way as the species that feed on sea anemones (Robertson, 1970). Like their extant counterparts, *E. lyui* n. sp. and *E. zhuoi* n. sp. from mid-Cretaceous Burmese amber are most likely tropical or subtropical and were part of the warm-water fauna in a normal shallow marine environment; they were also probably feeding on coelenterates although these are yet to be discovered in Burmese amber.

6. Conclusions

Two new species, *Epitonium (Epitonium) zhuoi* n. sp. and *Epitonium (Papyriscala) lyui* n. sp. are described from mid-Cretaceous Burmese amber. Our find is the first record of marine gastropods preserved in amber, and suggests that the Burmese amber forest probably grew close to the seashore. This is supported by the occurrence of pholadid bivalve borings in the amber whilst still resinous (Smith and Ross, 2018).

Acknowledgements

We are grateful to Hua-Zhang Pan for providing invaluable suggestions and Zong-Jun Yin and Su-Ping Wu for the micro-computed tomography reconstruction; also, to the editors and George Poinar and Adrienne Jochum for reviewing the manuscript and their useful comments on the submitted version of the paper. This research was supported by the Strategic Priority Research Program (B) of the Chinese Academy of Sciences (XDB26000000), the National Natural Science Foundation of China (41572010, 41622201, 41688103), and the State Key Laboratory of Palaeobiology and Stratigraphy (Nanjing Institute of Geology and Palaeontology, CAS) (No. 183101). This is a Leverhulme Emeritus Fellowship contribution for EJ.

References

- Bandel, K., 2006. Families of the Cerithioidea and related superfamilies (Palaeo-Caenogastropoda; Mollusca) from the Triassic to the Recent characterized by protoconch morphology — including the description of new taxa. *Freiberger Forschungshefte C* 511 (14), 59–138.
- Bergquist, H.R., 1944. Cretaceous of the Mesabi Iron Range, Minnesota. *Journal of Paleontology* 18 (1), 1–30.
- Berry, S.S., 1910. Report on a collection of shells from Peru, with a summary of the littoral marine Mollusca of the Peruvian zoological province, by William Healey Dall. *Nautilus* 23 (10), 130–132.
- Blagovetshenskiy, I.V., 2015. Gastropods of the family Epitoniidae from the Lower Cretaceous of the Volga Region near Ulyanovsk. *Paleontological Journal* 49 (4), 361–368.

- Bouchet, P., Waren, A., 1986. Revision of the north-east Atlantic bathyal and abyssal Aclididae, Eulimidae, Epitoniidae (Mollusca, Gastropoda). *Bollettino Malacologico Supplemento* 2, 297–576.
- Cernohorsky, W.O., 1978. *Tropical Pacific Marine Shells*. Pacific Publications, Sydney, 352 pp.
- Clench, W.J., Turner, R.D., 1952. The genera *Epitonium* (Part II), *Depressiscala*, *Cylindriscala*, *Nystiella* and *Solutiscala* in the western Atlantic. *Johnsonia* 2 (31), 289–356.
- Cox, L.R., Moore, R.C., 1960. General characteristics of the Gastropoda. In: Moore, R.C. (Ed.), *Treatise on Invertebrate Paleontology, Part I, Mollusca 1*. Geological Society of America and University of Kansas Press, Lawrence, KS, pp. 184–1169.
- Cruikshank, R.D., Ko, K., 2003. Geology of an amber locality in the Hukawng Valley, Northern Myanmar. *Journal of Asian Earth Sciences* 21, 441–455.
- de Boury, E.A., 1909a. Observations sur les Scalidæ des expéditions scientifiques de Travailleur et du Talisman. *Bulletin du Muséum d'Histoire Naturelle (Paris)* 15, 478–484.
- de Boury, E.A., 1909b. Catalogue des sous-genres de Scalidae. *Journal de Conchyliologie* 57, 255–258.
- Dockery, D.T., 1993. The streptoneuran gastropods exclusive of the *Stenoglossa*, of northeastern Mississippi. *Bulletin of the Mississippi Department of Environmental Quality, Office of Geology* 129, 1–191.
- Feng, W.M., 1996. Microgastropods from the Nansha sea area, China. In: *Institute of Oceanology, Chinese Academy of Sciences (Ed.), Studies on Marine Fauna and Flora and Biogeography of the Nansha Islands and Neighbouring Waters, II*. Ocean Press, Beijing, pp. 85–205 (in Chinese).
- Fleming, J., 1822. *The Philosophy of Zoology: Or, A General View of the Structure, Functions, and Classification of Animals*. Archibald Constable, Edinburgh, 618 pp.
- Grimaldi, D.A., Engel, M.S., Nascimbene, P.C., 2002. Fossiliferous Cretaceous amber from Myanmar (Burma): its rediscovery, biotic diversity, and paleontological significance. *American Museum Novitates* 62, 1–71.
- Hall, R., 2012. Late Jurassic–Cenozoic reconstructions of the Indonesian region and the Indian Ocean. *Tectonophysics* 570, 1–41.
- Kaim, A., 2004. The evolution of conch ontogeny in a Mesozoic open sea gastropod. *Palaeontologia Polonica* 62, 1–183.
- Kania, I., Wang, B., Szvedo, J., 2015. *Dicranoptycha* Osten-Sacken, 1860 (Diptera, Limoniidae) from the earliest Cenomanian Burmese amber. *Cretaceous Research* 52, 522–530.
- Kase, T., 1984. Early Cretaceous marine and brackish-water Gastropoda from Japan. *National Science Museum Monographs* 1, 1–189.
- Keen, A.M., 1971. *Sea Shells of Tropical West America*, 2nd edition. Stanford University Press, Stanford, CA, 1064 pp.
- Kilburn, R., Rippey, E., 1982. *Sea Shells of Southern Africa*. Macmillan, Johannesburg, 240 pp.
- Kilburn, R.N., 1985. The family Epitoniidae (Mollusca: Gastropoda) in southern Africa and Mozambique. *Annals of the Natal Museum* 27, 239–337.
- Kiener, L.C., 1838. *Species General Et Iconographie Des Coquilles Vivantes: Comprenant La Collection Du Muséum D'Histoire Naturelle de Paris, La Collection Lamarck, Celle Du Prince Massena (Appartenant Maintenant A M.B Delessert) Et Les Découvertes Recentes Des Voyageurs*. Rousseau and Baillière, Paris, 250 pp.
- Kollmann, H.A., 2005. Révision critique de la Paléontologie Française d'Alcide d'Orbigny (incluant la réédition de l'original). Volume 3, *Gastropodes Crétacés*. Backhuys Publishers, Leiden, 239 pp.
- Ladd, H.S., 1970. Eocene mollusks from Eua, Tonga. U.S. Geological Survey Professional Paper 640-C, 1–12.
- Lima, S.F.B., Christoffersen, M.L., Barros, J.C.N., Folly, M., 2012. Records and descriptions of Epitoniidae (Orthogastropoda: Epitonioidae) from the deep sea off northeastern Brazil and a checklist of *Epitonium* and *Opalia* from the Atlantic coast of South America. *International Journal of Zoology*, Article ID 394381, <https://doi.org/10.1155/2012/394381>.
- Linnaeus, C., 1758. *Systema Naturae per Regna Tria Naturae*, 10th Edition, Revised, Volume 1: *Regnum Animale*. Salvii, L. Holmiae, Stockholm, 824 pp.
- Macneil, F.S., 1960. The Tertiary and Quaternary Gastropoda of Okinawa. U.S. Geological Survey Professional Paper 339, 1–148.
- Melville, J.C., Standen, R., 1903. The genus *Scala* (Klein) Humphrey, as represented in the Persian Gulf, Gulf of Oman, and North Arabian Sea, with descriptions of new species. *Journal of Conchology* 10 (11), 340–351.
- Mörch, O.A.L., 1857. Fortegnelse over Grønlands Bløddyr. In: Rink, H.J. (Ed.), *Grønland Geographisk og Statistisk Beskrevet*. Nabu Press, København, pp. 1–75.
- Naggs, F., Raheem, D., 2005. Sri Lankan snail diversity: faunal origins and future prospects. *Records of the Western Australia Museum Supplement* 68, 11–29.
- Perrilliat, M.C., Vega, F.J., Corona, R., 2000. Early Maastrichtian Mollusca from the Mexcala Formation of the State of Guerrero, southern Mexico. *Journal of Paleontology* 74 (1), 7–24.
- Poinar, G.O., 2011. *The Evolutionary History of Nematodes as Revealed in Stone, Amber and Mummies*. Brill, Leiden, 429 pp.
- Poinar, G.O., Poinar, R., 2007. *What Bugged the Dinosaurs? Insects, Disease, and Death in the Cretaceous*. Princeton University Press, Princeton, 296 pp.
- Robertson, R., 1970. Review of the predators and parasites of stony corals, with special reference to symbiotic prosobranch gastropods. *Pacific Science* 24, 43–54.
- Röding, P.F., 1798. *Museum Boltenianum sive catalogus cimeliorum etribus regnis naturae que olim collegertat Joa. Fried Bolten, M. D.p. d. Pars secunda continens conchylia sive testacea univalvia, bivalvia & multivalvia*. Johan. Christi. Trappii, Hamburg, 199 pp.
- Ross, A., Mellish, C., York, P., Crighton, B., 2010. Chapter 12. Burmese amber. In: Penney, D. (Ed.), *Biodiversity of Fossils in Amber from the Major World Deposits*. Siri Scientific Press, Manchester, pp. 208–235.
- Sevastjanova, I., Hall, R., Rittner, M., Paw, S.M.T.L., Naing, T.T., Alderton, D.H., Comfort, G., 2016. Myanmar and Asia united, Australia left behind long ago. *Gondwana Research* 32, 24–40.
- Shi, G., Grimaldi, D.A., Harlow, G.E., Wang, J., Wang, J., Yang, M., Lei, W., Li, Q., Li, X., 2012. Age constraint on Burmese amber based on U-Pb dating of zircons. *Cretaceous Research* 37, 155–163.
- Smith, R.D.A., Ross, A.J., 2018. Amberground pholadid bivalve borings and inclusions in Burmese amber: implications for proximity of resin-producing forests to brackish waters, and the age of the amber. *Earth and Environmental Science Transactions of the Royal Society of Edinburgh* 107, 239–247.
- Sohl, N.F., 1964. Gastropods from the Coffee Sand (Upper Cretaceous) of Mississippi. U.S. Geological Survey Professional Paper 331-C, 385–394.
- Suter, H., 1913. *Manual of the New Zealand Mollusca*. Government Printer, Wellington, 1120 pp.
- Wandrey, C.J., 2006. Eocene to Miocene composite total petroleum system, Irrawaddy-Andaman and North Burma geologic provinces, Myanmar. U.S. Geological Survey Bulletin 1, 1–26.
- Yu, T.T., Wang, B., Pan, H.Z., 2018. New terrestrial gastropods from mid-Cretaceous Burmese amber. *Cretaceous Research* 90, 254–258.